

Anti-CD132 Antibody
Rabbit polyclonal antibody to CD132
Catalog # AP61242

Specification

Anti-CD132 Antibody - Product Information

Application	WB
Primary Accession	P31785
Other Accession	P34902
Reactivity	Human, Mouse, Rat, Pig
Host	Rabbit
Clonality	Polyclonal
Calculated MW	42287

Anti-CD132 Antibody - Additional Information

Gene ID 3561

Other Names

Cytokine receptor common subunit gamma; Interleukin-2 receptor subunit gamma; IL-2 receptor subunit gamma; IL-2R subunit gamma; IL-2RG; gammaC; p64; CD132

Target/Specificity

Recognizes endogenous levels of CD132 protein.

Dilution

WB~~WB (1/500 - 1/1000)

Format

Liquid in 0.42% Potassium phosphate, 0.87% Sodium chloride, pH 7.3, 30% glycerol, and 0.09% (W/V) sodium azide.

Storage

Store at -20 °C. Stable for 12 months from date of receipt

Anti-CD132 Antibody - Protein Information

Name IL2RG

Function

Common subunit for the receptors for a variety of interleukins. Probably in association with IL15RA, involved in the stimulation of neutrophil phagocytosis by IL15 (PubMed:15123770).

Cellular Location

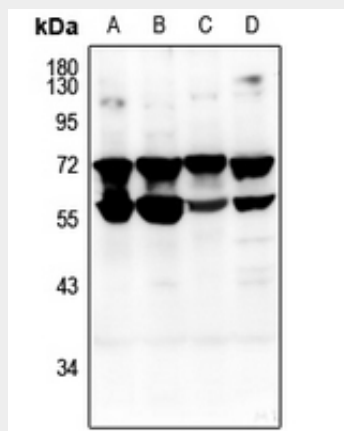
Cell membrane; Single-pass type I membrane protein. Cell surface

Anti-CD132 Antibody - Protocols

Provided below are standard protocols that you may find useful for product applications.

- [Western Blot](#)
- [Blocking Peptides](#)
- [Dot Blot](#)
- [Immunohistochemistry](#)
- [Immunofluorescence](#)
- [Immunoprecipitation](#)
- [Flow Cytometry](#)
- [Cell Culture](#)

Anti-CD132 Antibody - Images



Western blot analysis of CD132 expression in Myla2059 (A), HCT116 (B), mouse lung (C), rat spleen (D) whole cell lysates.

Anti-CD132 Antibody - Background

KLH-conjugated synthetic peptide encompassing a sequence within the center region of human CD132. The exact sequence is proprietary.